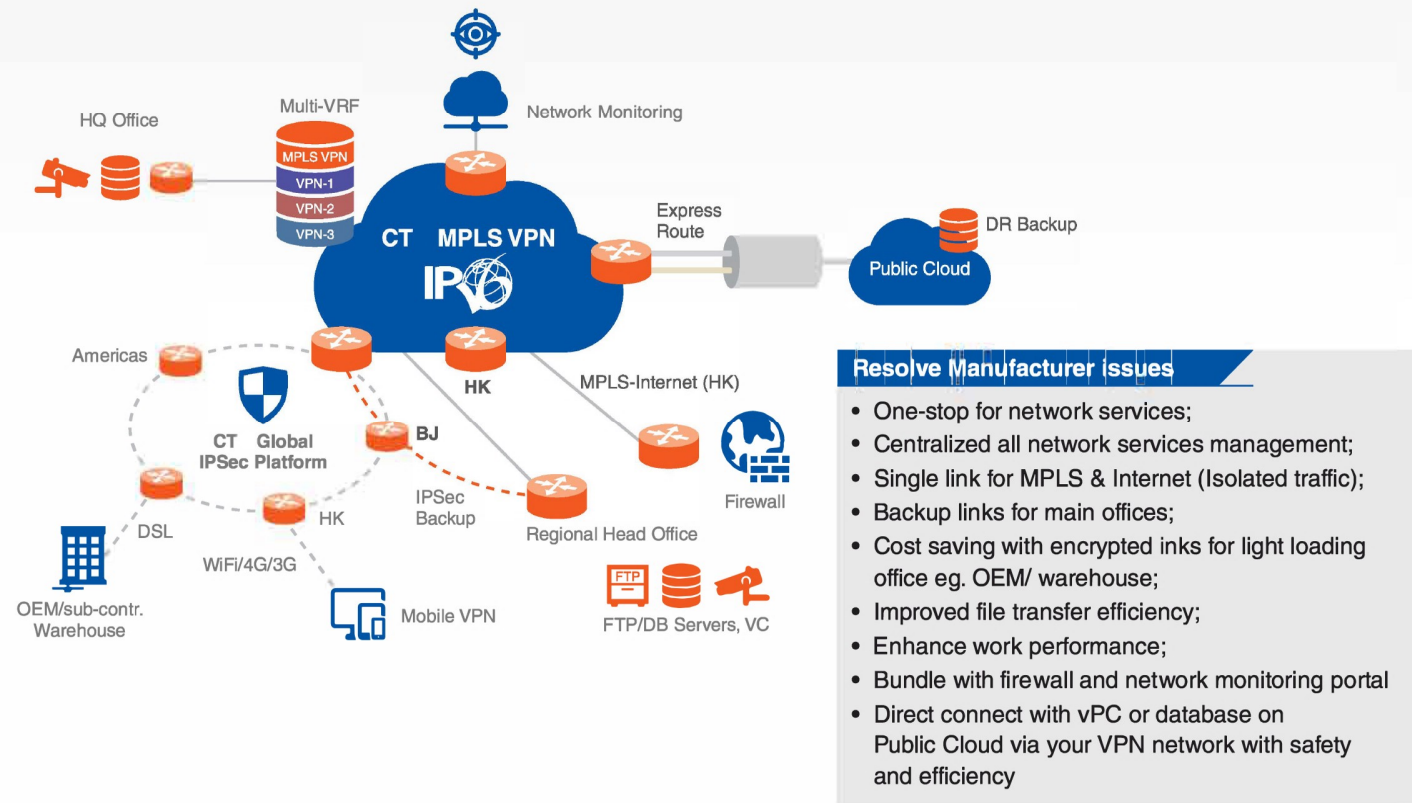


Manufacturing Network Solution



About China Telecom Americas

China Telecom Americas, a wholly-owned US-based subsidiary of China Telecom Corp. Ltd. (NYSE: CHA), is an international telecom provider for data, IP and voice wholesale services to multinational companies, organizations and international carriers requiring China domestic services and international access to China & throughout Asia-Pacific. Headquartered in Herndon, Virginia, China Telecom Americas is the largest international subsidiary of China Telecom Corporation Limited, as well as the only authorized re-seller of domestic Chinese telecom products to North American companies. China Telecom Americas has offices in 31 countries, providing access to Chinese telecom network assets for customers in the United States, Canada and Latin America. As the largest operating broadband operator in the world (127 million subscribers), as well as the world's largest CDMA mobile operator (227 million subscribers), China Telecom delivers a comprehensive global telecom service scope based on cutting edge technology, exceptional customer service, and a visionary approach to international telecommunications.

Awards

- **Best Telecommunications Company in Asia** (2016) FinanceAsia
- **Best Managed Company in Asia Telecom Sector** (2010-2016) FinanceAsia
- **Customer Relationship Excellence Award** (2012-2016) Asia Pacific Customer Service Consortium
- **Best Managed Company in Asia** (2010-2016) Euromoney
- **Most Honored Company** (2011-2016) Institutional Investor
- **The Best of Asia** (2010-2016) Corporate Governance



China Telecom Americas
 3607 Herndon Parkway, Suite 201, Herndon, VA 20170
 Tel: (703) 787 - 0088 Email: marketing@ctamericas.com Website: www.ctamericas.com



MPLS-VPN Global Network Solution










With our global transmission network, high performance Convergent Network(CN2), extensive resources and cutting-edge technology, CTA is the leading IP-VPN provider for the vital connection from overseas to China and vice versa. With a superior and scalable global VPN, CTA offers you the most direct, one-stop service to manage your network no matter where your business takes you.

Service Features

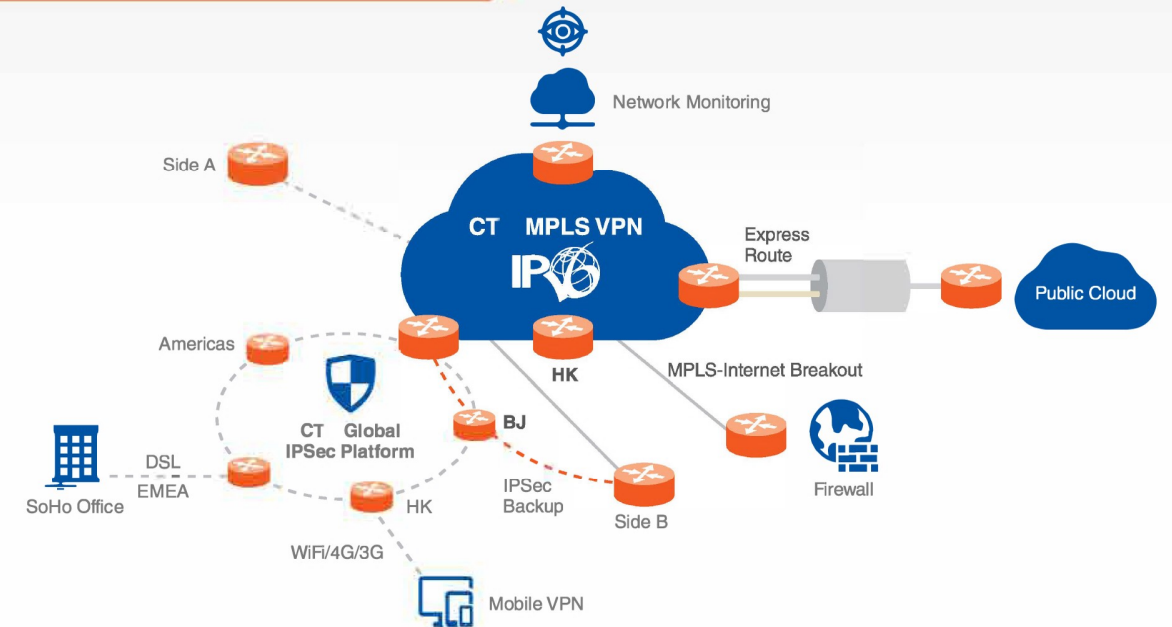
- Our global MPLS network is equipped with multiple, cutting-edge technologies to adapt to your networking needs;
- CTA's vast network secures your data transmission seamlessly, particularly for VoIP, Video or ERP applications;
- High network scalability that adapts to your business needs;
- High network security and performance, especially when you need cloud service access;
- Rapid cloud service enablement via CTA direct cloud connection with MPLS network;
- Guaranteed network performance bundled with Service Level Agreement (SLA);
- Site availability rate: 99.9% to 99.99%;
- Mean time to repair (MTTR): <=4 hours;
- Service coverage over 312 cities in Mainland China.



Services and Solutions

 <p>Flexible access options Multiple access options connect to our MPLS network, including optical link, Ethernet, SONET, xDSL and mobile devices</p>	 <p>5 classes of Services Customizable QoS for applications that need real-time traffic, database and cloud service access</p>	 <p>MPLS-Clouds connection Direct connection to global cloud providers</p>	 <p>Internet breakout Aggregate internet traffic by centralized management and security control, releasing ITs work load and cost saving</p>
 <p>Flexible addressing Support IPv4, IPv6 and dual stack</p>	 <p>Online reporting tools Customer web portal provides real-time report on network performance and bandwidth utilization anytime and anywhere</p>	 <p>24x7 network monitoring, management and support Proactive real-time network monitoring service for fault and notification</p>	

MPLS VPN New Features

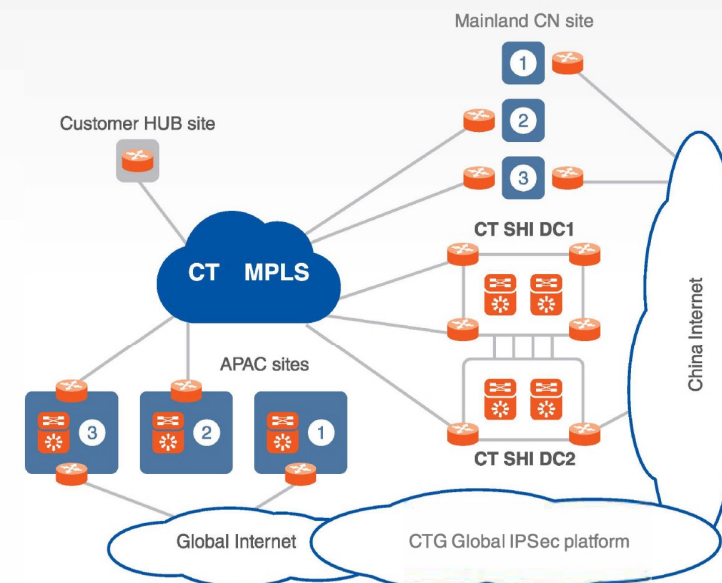


CT MPLS VPN Coverage

<p>Europe</p> <ul style="list-style-type: none"> Frankfurt Stockholm Paris London Prague Moscow Milan Amsterdam Istanbul 	<p>Far East</p>	<p>Asia Pacific</p> <ul style="list-style-type: none"> Beijing Shanghai Guangzhou Urumqi Hong Kong Macao Singapore Tokyo Haishenwai Seoul Jakarta Bangkok Sydney Perth 	<p>Americas</p> <ul style="list-style-type: none"> Los Angeles New York Seattle Washington DC Miami Dallas Chicago San Jose Toronto Sao Paulo
--	------------------------	---	--

- 40+ nodes in major overseas cities
- Over 1000 service points globally
- Full coverage in Mainland China dual PoP/dual PE
- Full range of Managed Services
- Proactive Network Management

Retail Network Solution



Resolve Retailer issues

- Require fast shop network setup with headquarters;
- Require low network cost;
- Low bandwidth/utilization at shops warehouse etc.;
- Panic at managing multi-service providers;
- Limited local support for distributed shops;

- ① IPSec connection
- ② MPLS connection
- ③ MPLS + IPSec connections